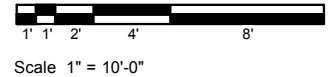
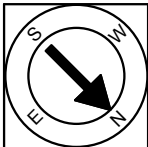


First Floor Plan
Ceiling Height = 8'-2"

12 Fresh Pond Lane
Cambridge, MA 02138



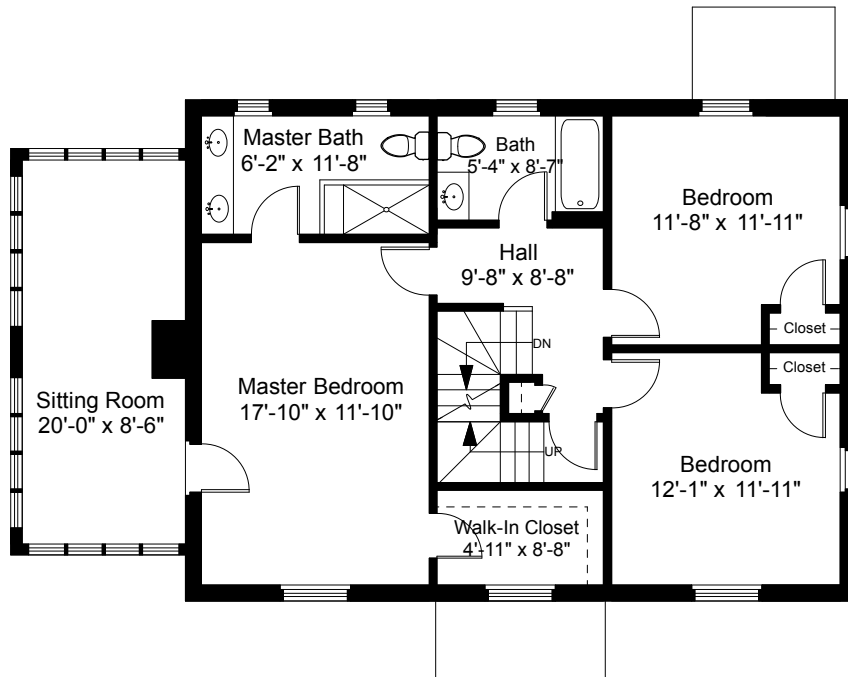
1



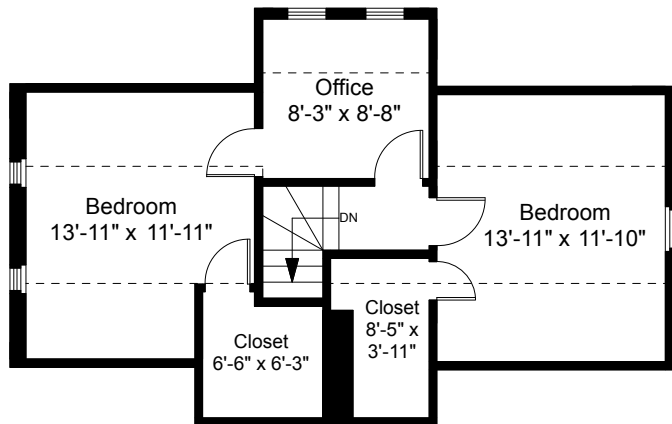
Completed: September 2015

Note: Dimensions are not guaranteed and are provided for informational purposes only.

NEW ENGLAND
FLOOR PLANS
& PHOTOGRAPHY
(800) 328-0217

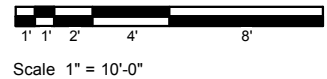


Second Floor Plan
Ceiling Height = 7'-10"

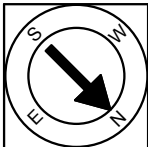


Third Floor Plan
Ceiling Height = 7'-4"

12 Fresh Pond Lane
Cambridge, MA 02138



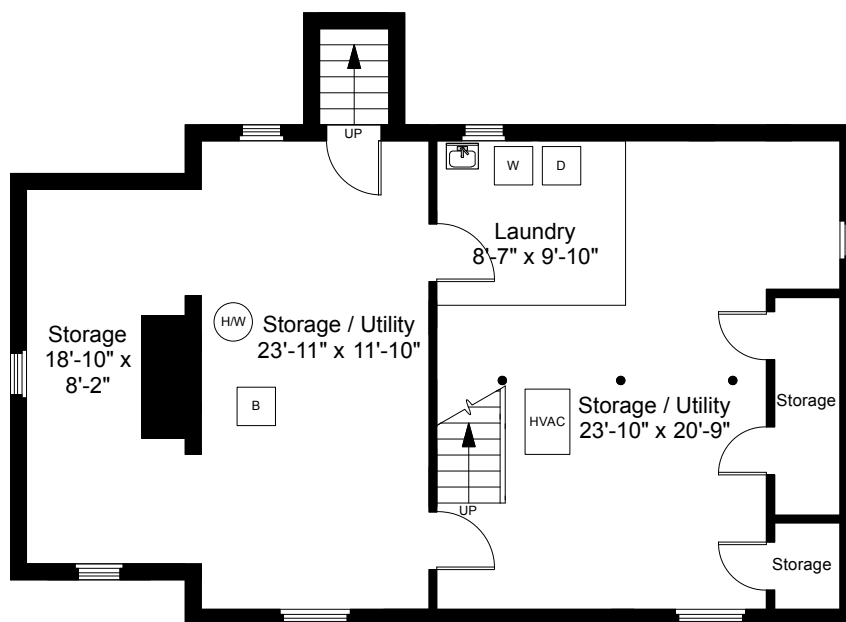
2



Completed: September 2015

Note: Dimensions are not guaranteed and are provided for informational purposes only.

NEW ENGLAND
FLOOR PLANS
& PHOTOGRAPHY
(800) 328-0217



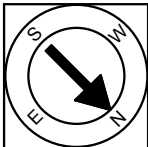
Basement Plan
Ceiling Height = 7'-6"

12 Fresh Pond Lane
Cambridge, MA 02138



Scale 1" = 10'-0"

3



Completed: September 2015

Note: Dimensions are not guaranteed and are provided for informational purposes only.

NEW ENGLAND
FLOOR PLANS
& PHOTOGRAPHY
(800) 328-0217