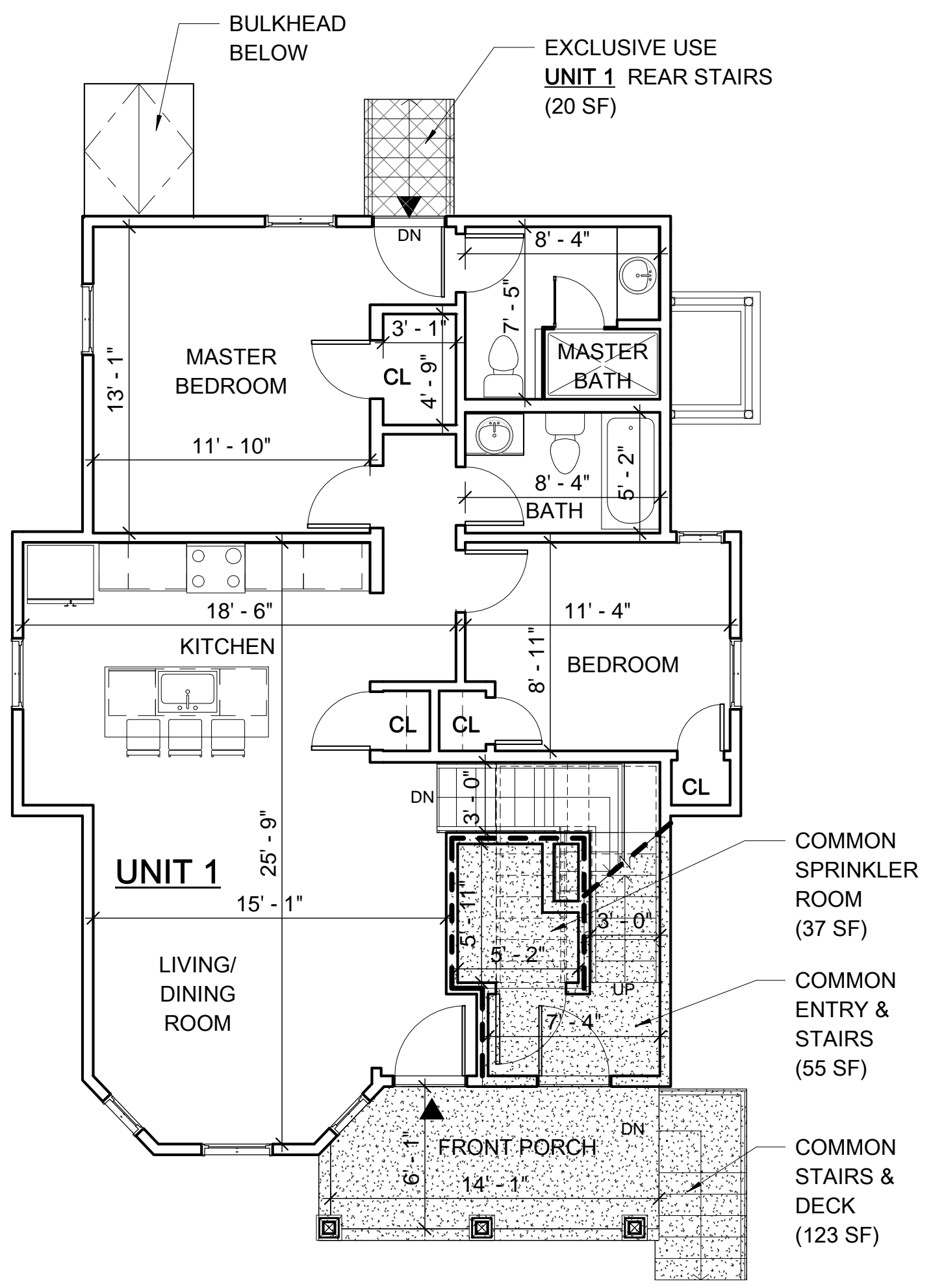
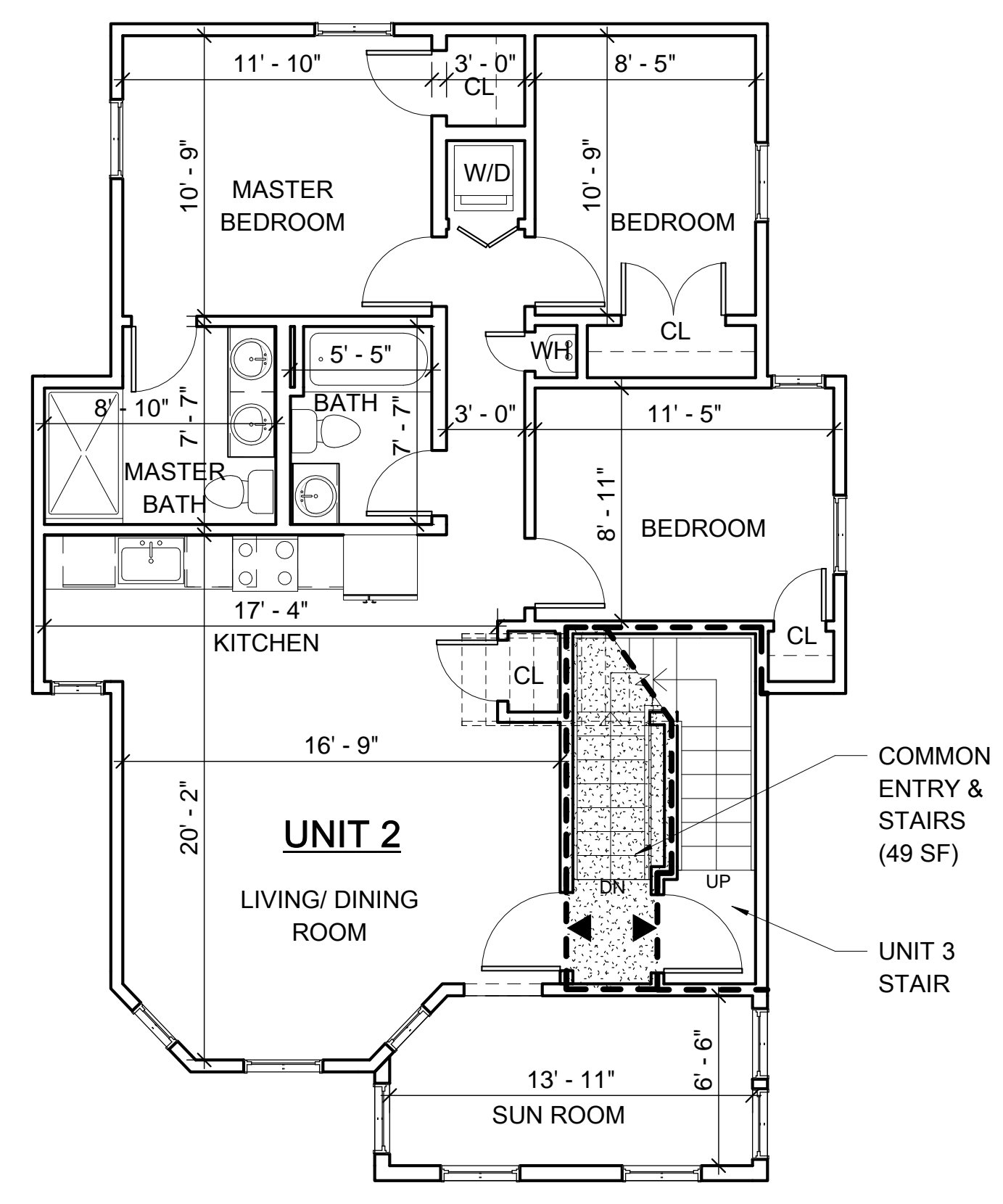


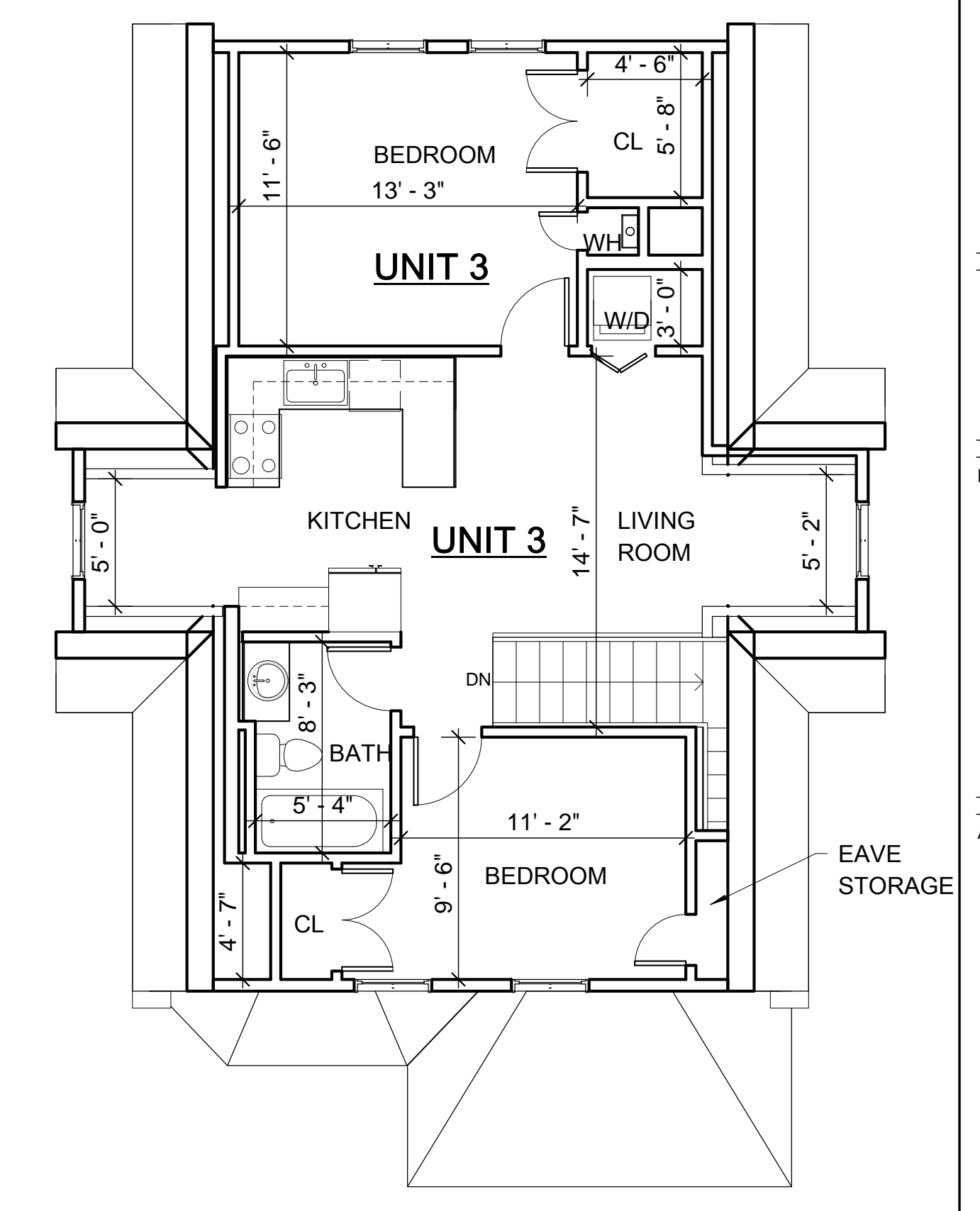
1 MD - BASEMENT  
3/16" = 1'-0"



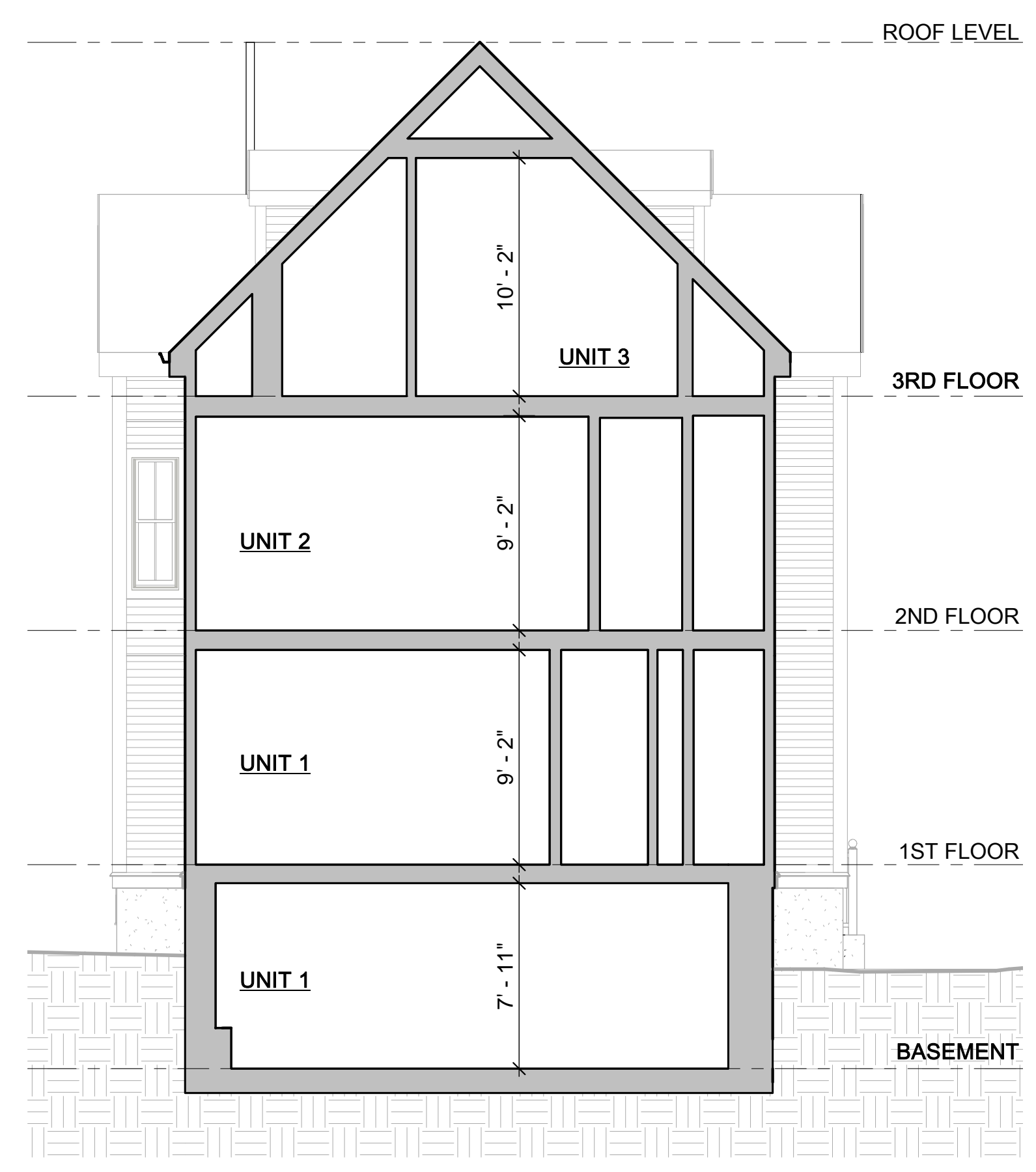
2 MD - 1ST FLOOR  
3/16" = 1'-0"



3 MD - 2ND FLOOR  
3/16" = 1'-0"



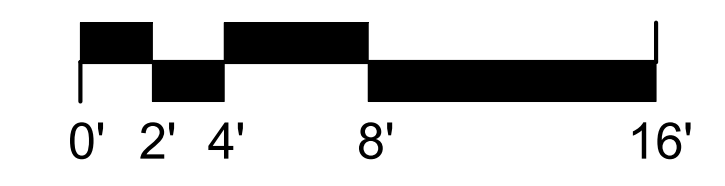
4 MD - 3RD FLOOR  
3/16" = 1'-0"



5 BUILDING SECTION  
3/16" = 1'-0"

UNIT NO.	UNIT SQUARE FOOTAGE
1	2,004 SF UNIT (1,056 SF BASEMENT + 948 SF FIRST FLOOR + 20 SF EXCLUSIVE USE REAR STAIRS)
2	1,036 SF UNIT (1,036 SF SECOND FLOOR)
3	869 SF UNIT (58 SF SECOND FLOOR + 811 SF THIRD FLOOR)

FLOOR NO.	GROSS FLOOR AREA	COMMON FLOOR AREA
BASEMENT	1,056 SF	0 SF
1	1,040 SF	55 SF COMMON ENTRY & STAIRS + 37 SF COMMON SPRINKLER ROOM
2	1,143 SF	49 SF COMMON STAIRS
3	974 SF	0 SF
TOTAL	4,186 SF	141 SF



FOR REGISTRY USE ONLY  
**SACRAMENTO PLACE CONDOMINIUM**  
 18-20 SACRAMENTO PLACE  
 CAMBRIDGE, MA

LEGEND

ARCHITECT



**KHALSA**

17 IVALOO STREET SUITE 400  
 SOMERVILLE, MA 02143  
 TELEPHONE: 617-591-8682 FAX: 617-591-2086

CERTIFICATION:

I CERTIFY THAT THIS PLAN FULLY AND ACCURATELY DEPICTS THE LAYOUT, LOCATION, UNIT NUMBER AND DIMENSIONS OF UNITS 1, 2 & 3 18-20 SACRAMENTO PLACE, CAMBRIDGE, MA, AS BUILT. THIS PLAN HAS BEEN PREPARED IN CONFORMITY WITH THE RULES AND REGULATIONS OF THE MIDDLESEX COUNTY SOUTH REGISTRY OF DEEDS.

JAI SINGH KHALSA, NCARB,  
 ARCHITECT  
 MA REG. NO. 6042  
 DATE:

REGISTRATION

Project number 17052  
 Date 01/02/2019  
 Drawn by DM  
 Checked by JSK

FLOOR PLANS FOR MASTER DEED

**MD-01**

Scale: 3/16" = 1'-0"  
 Project name: SACRAMENTO PLACE CONDOMINIUM

1/7/2019 1:54:37 PM