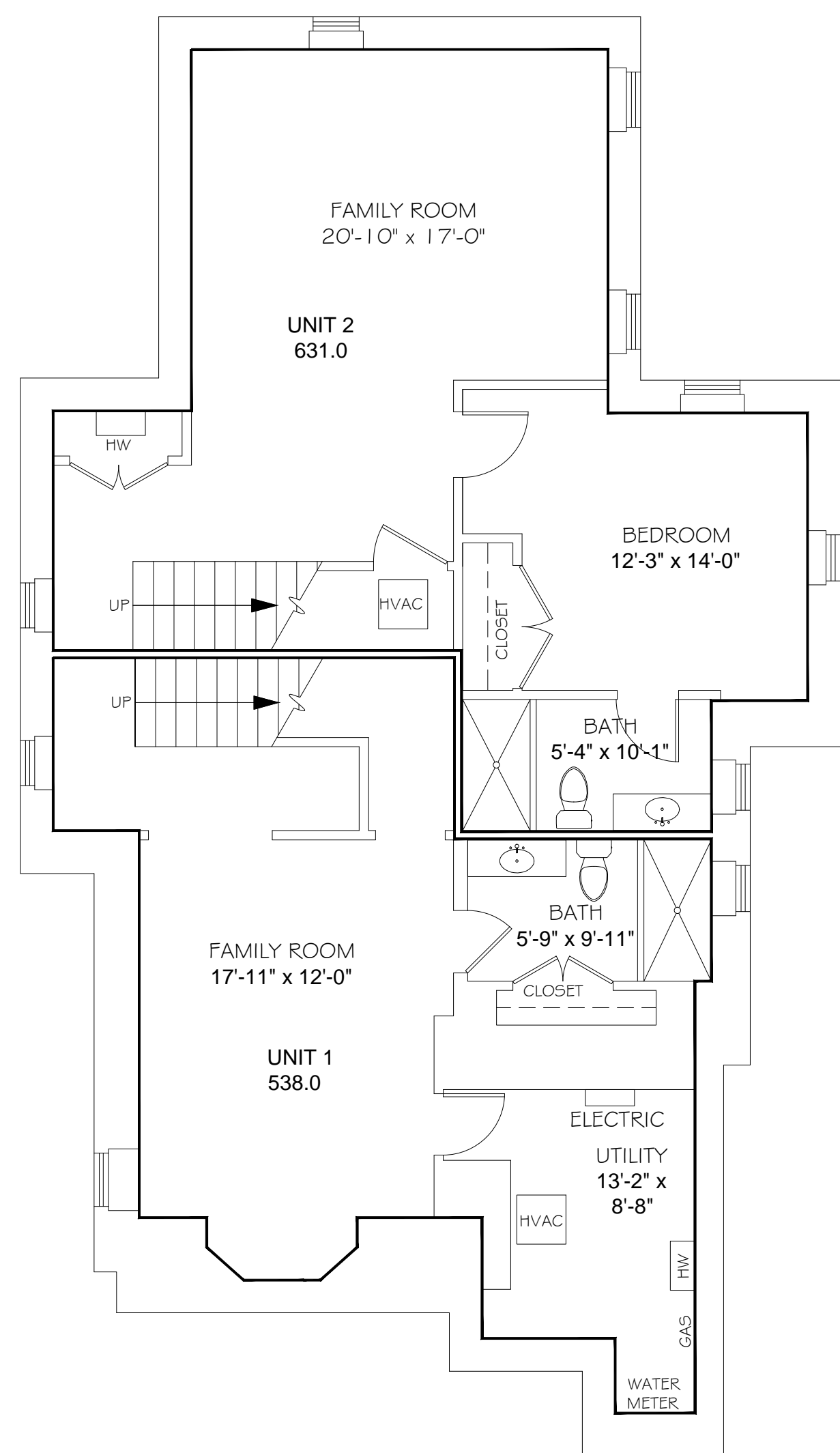
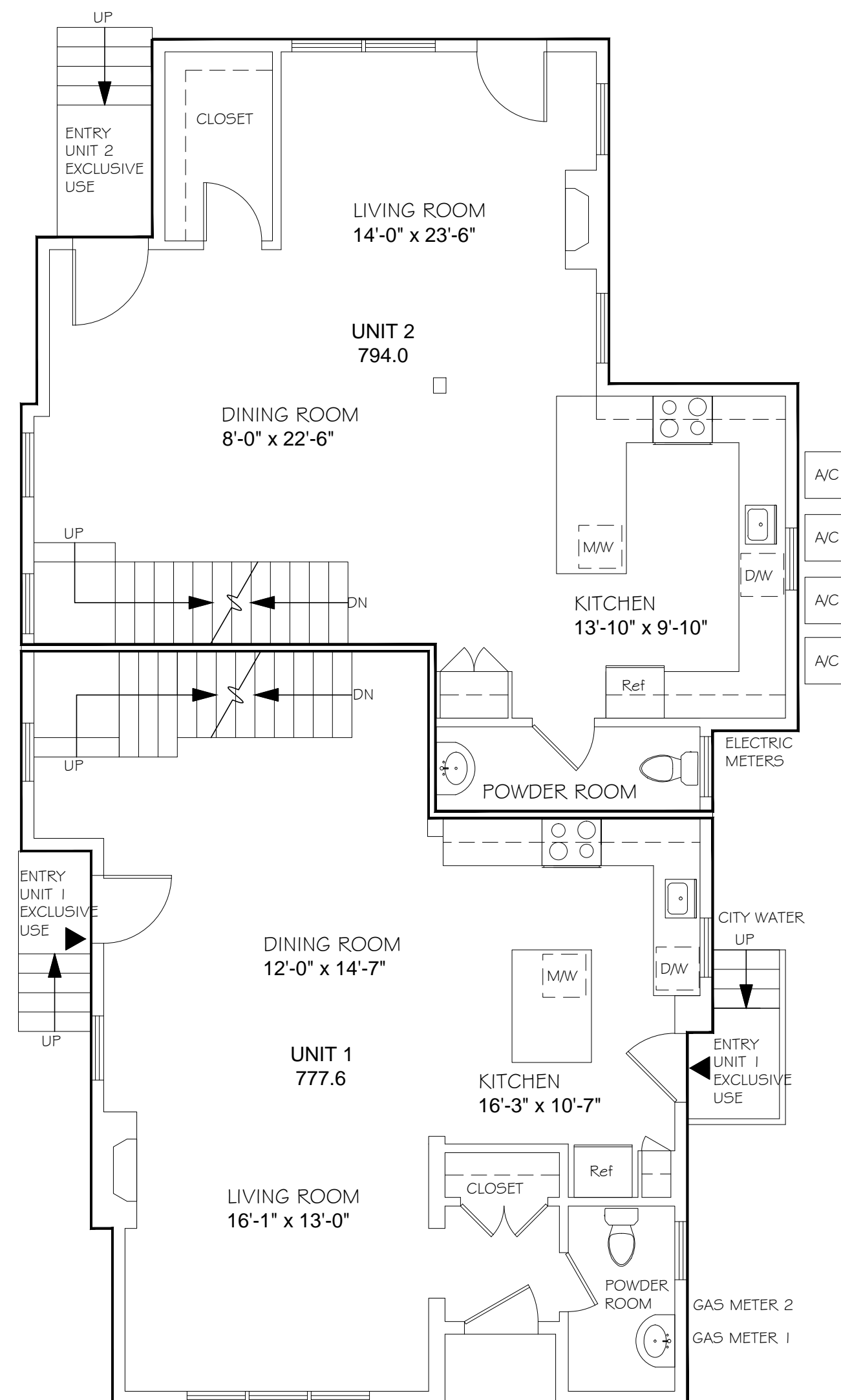


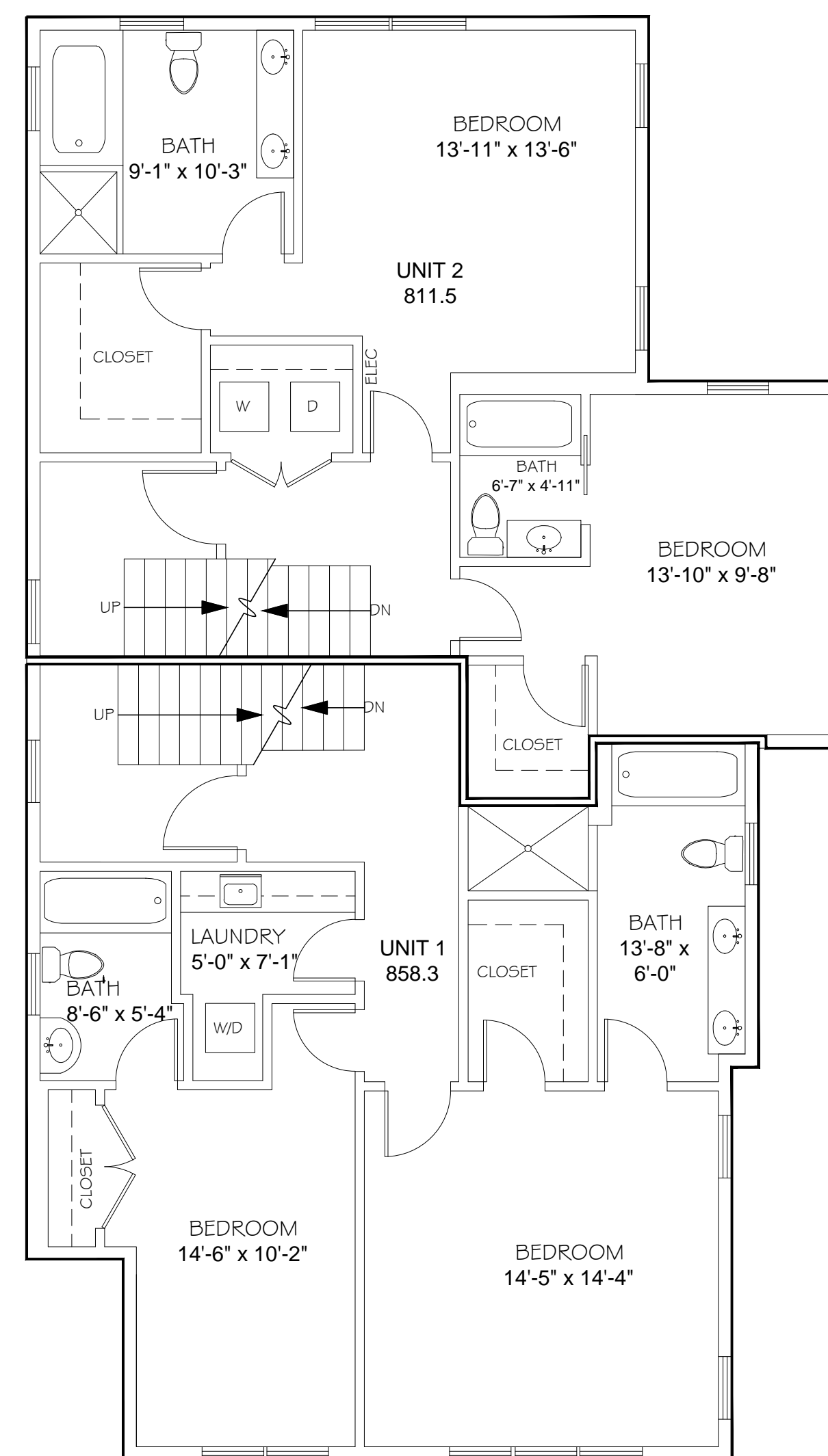
RESERVED FOR REGISTRY USE



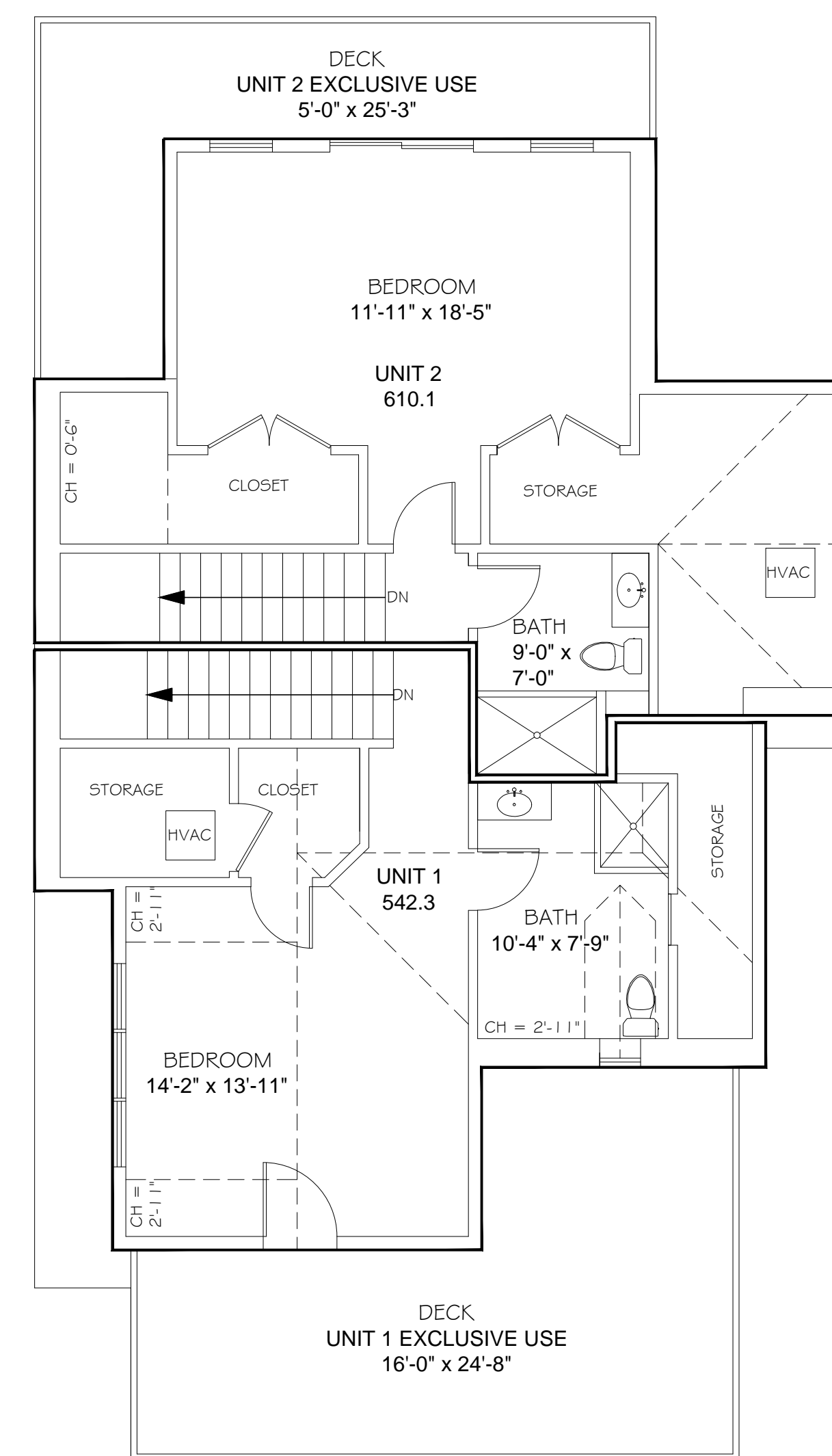
LOWER LEVEL PLAN
Ceiling Height = 8'-0"



FIRST FLOOR PLAN
Ceiling Height = 9'-3"



SECOND FLOOR PLAN
Ceiling Height = 8'-1"



THIRD FLOOR PLAN
Ceiling Height = 9'-8"

CONDOMINIUM AREA CALCULATIONS

Unit 1 Square Footage:

LOWER LEVEL	538.0 SF
FIRST FLOOR	777.6 SF
SECOND FLOOR	858.3 SF
THIRD FLOOR	542.3 SF
TOTAL:	2,716.2 TOTAL SF

Unit 2 Square Footage:

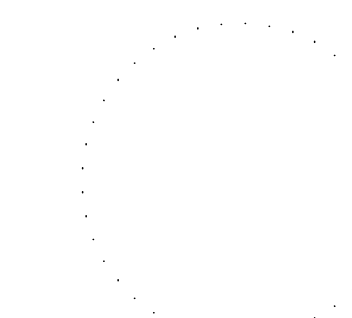
LOWER LEVEL	631.0 SF
FIRST FLOOR	794.0 SF
SECOND FLOOR	811.5 SF
THIRD FLOOR	610.4 SF
TOTAL:	2,846.9 TOTAL SF

I HEREBY CERTIFY THAT THESE PLANS CONFORM TO THE RULES AND REGULATIONS OF THE REGISTERS OF DEEDS OF THE COMMONWEALTH OF MASSACHUSETTS.

I HEREBY CERTIFY THAT THE FLOOR PLANS HERE REPRESENTED, OF THE 170 ERIE STREET CONDOMINIUM, FULLY AND ACCURATELY DEPICT THE LAYOUT, LOCATION, UNIT NUMBERS, AND DIMENSIONS OF THE UNITS AS BUILT.

DATE: _____

SIGNED: _____



GCD ARCHITECTS
2 WORTHINGTON ST
CAMBRIDGE, MA 02138

**170 ERIE STREET CONDOMINIUM
CONDOMINIUM FLOOR PLANS**

01/10/2018
Cambridge, MA

LEGEND

UNIT ENTRY ▲

GRAPHIC SCALE 0 2 4 8