

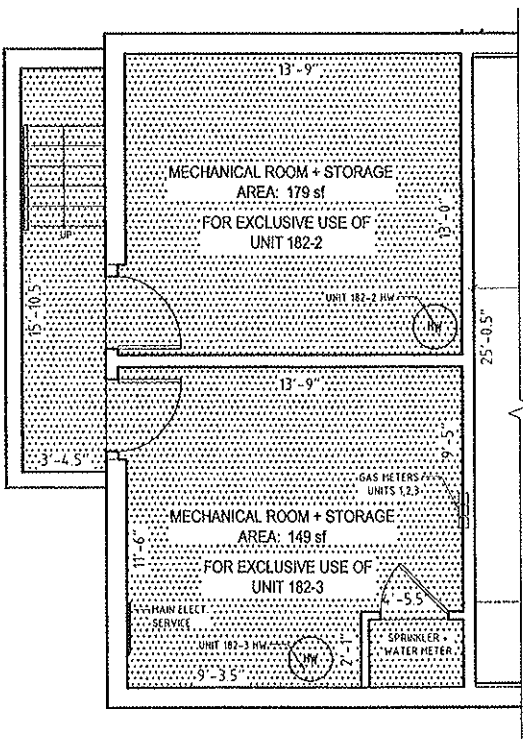
SECOND FLOOR PLAN

KEY:

- UNIT MAIN ENTRY
- COMMON AREA
- AREAS EXCLUDED FROM UNIT

SCALE: 1/8" = 1'-0"

NOTE: AREAS ARE CALCULATED TO THE UNIT-SIDE FACE OF EXTERIOR WALLS AND TO THE UNIT-SIDE FACE OF PARTY OR COMMON WALLS. DIMENSIONS ARE ROUNDED TO THE NEAREST 1/2".



PARTIAL BASEMENT PLAN

I HEREBY CERTIFY THAT THIS PLAN(S) SHOWS THE DESIGNATION OF UNIT 182-2 LOCATED IN THE 182-184 ELM STREET CONDOMINIUM AT 182 ELM STREET, CAMBRIDGE, MA, AND THE IMMEDIATELY ADJOINING UNITS, AND THAT THIS PLAN(S) FULLY AND ACCURATELY DEPICTS THE LAYOUT OF THE UNIT, ITS LOCATION, DIMENSIONS, APPROXIMATE UNIT AREA, MAIN ENTRY AND IMMEDIATE COMMON AREA TO WHICH IT HAS ACCESS, AS BUILT AT:

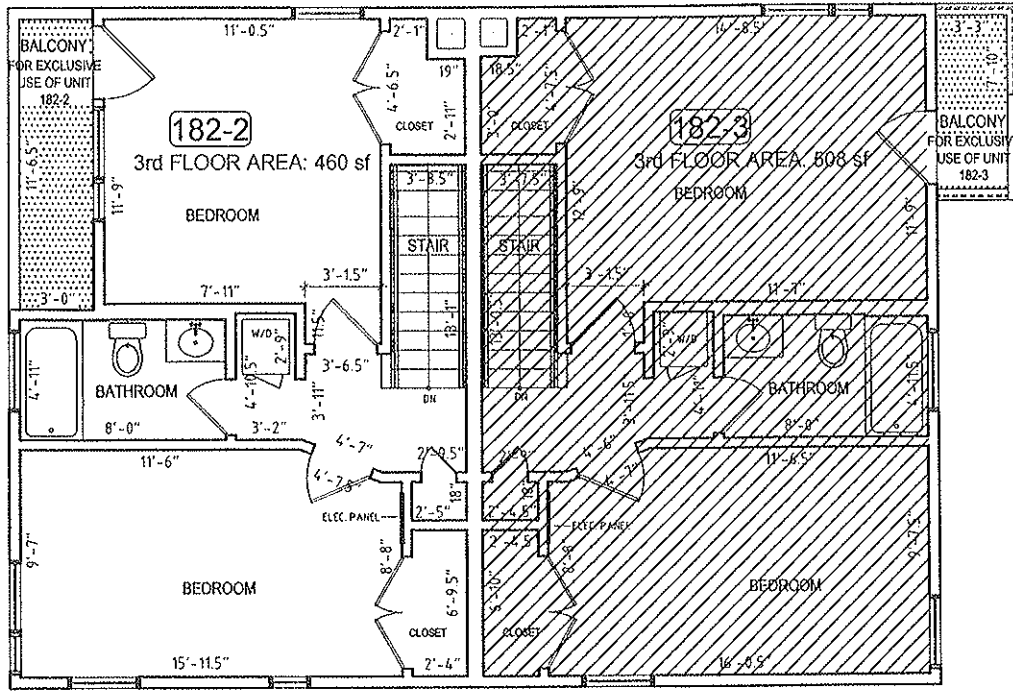
182-184 ELM STREET CONDOMINIUM
182 Elm Street Cambridge, MA

REGISTERED ARCHITECT
JOHN HONG
No. 11046
CAMBRIDGE, MA
COMMONWEALTH OF MASSACHUSETTS

JOHN S. HONG, AIA, NCARB DATE 05/11/05

© COPYRIGHT 2005 SINGLE speed DESIGN. UNAUTHORIZED USE IS PROHIBITED.

SINGLE speed DESIGN LLP 171 BROOKLINE STREET / CAMBRIDGE MA 02139 t 617.576.9300 / 617.576.7200 / www.single-speeddesign.com	0201	SECOND FLOOR & PARTIAL BASEMENT PLAN	UNIT 182-2
		182-184 ELM STREET CONDOMINIUM	SHEET 1 of 2



THIRD FLOOR PLAN

KEY:

- UNIT MAIN ENTRY
- COMMON AREA
- AREAS EXCLUDED FROM UNIT

SCALE: 1/8" = 1'-0"

NOTE: AREAS ARE CALCULATED TO THE UNIT-SIDE FACE OF EXTERIOR WALLS AND TO THE UNIT-SIDE FACE OF PARTY OR COMMON WALLS. DIMENSIONS ARE ROUNDED TO THE NEAREST 1/2".

I HEREBY CERTIFY THAT THIS PLAN(S) SHOWS THE DESIGNATION OF UNIT 182-2 LOCATED IN THE 182-184 ELM STREET CONDOMINIUM AT 182 ELM STREET, CAMBRIDGE, MA, AND THE IMMEDIATELY ADJOINING UNITS, AND THAT THIS PLAN(S) FULLY AND ACCURATELY DEPICTS THE LAYOUT OF THE UNIT, ITS LOCATION, DIMENSIONS, APPROXIMATE UNIT AREA, MAIN ENTRY AND IMMEDIATE COMMON AREA TO WHICH IT HAS ACCESS, AS BUILT AT:

182-184 ELM STREET CONDOMINIUM
182 Elm Street Cambridge, MA

[Signature]
JOHN S. HONG, AIA, NCARB

DATE: Oct. 05

© COPYRIGHT 2005 SINGLE speed DESIGN. UNAUTHORIZED USE IS PROHIBITED.

SINGLE speed DESIGN LLP 171 BROOKLINE STREET / CAMBRIDGE MA 02139 t 617.576.9300 / f 617.576.7200 / www.single-speeddesign.com	0201	THIRD FLOOR PLAN	UNIT 182-2
		182-184 ELM STREET CONDOMINIUM	SHEET 2 of 2